

# intellimix

## SIMPLE AND SMART!

Intellimix® represents a new standard for digital desktop mixing. It offers full routing, troublefree mixing and automated monitoring – all from a clever design that satisfies the need for quick and intuitive operation. Primarily intended to be the front end for PC-based workstations, Intellimix® is well-suited for many other applications. **Simple and smart.** Uncomplicated, yet individually configurable. It passes the scrutiny of today's demanding broadcasters with flying colors.

**Intellimix® is designed logically.** A compact desktop Control Unit links to its Base Unit via a single RS232 cable. The integration of Intellimix® to your existing workstation is very straightforward. No maddening cable harnesses on your desktop, no redesign of your workspace. The few controls are easy to understand and do not require a lengthy study of the operating manual. All functions are intuitive. The Control Unit does not carry any audio, so you can place it wherever you like. All audio and control I/Os are found on the Intellimix® Base Unit, which can be installed where it belongs – away from the desktop, close to the equipment in your audio rack.

To find out about the real intelligence of Intellimix® check out the versatile and powerful Windows® based configuration software. Loaded on a PC that connects to the Base Unit, it will reveal the hidden power of the full digital design. Label your input sources in seconds, easily set up your monitoring preferences, assign the 2 different Mix-Minus outputs, design your individual control logic – **make Intellimix® work the way you want.** Easy to use, technically perfect. And it's affordable. Pretty soon, nobody will remember how they managed to do their work without Intellimix®.

## YELLOWTEC® SMARTCARD – YOUR PERSONAL KEY

▶▶ As soon as your staff discovers the power of Intellimix®, each one of them will want to use it. With the endless variety of configuration parameters available to each user, there is only one logical way to bring order to potential chaos: The unique Yellowtec® SmartCard. It stores individual set-ups so multiple users can quickly re-configure the unit to their tastes when needed. Recalling personal preferences simply requires the insertion of the card into a slot in the Control Unit! Users can even move from studio to studio and carry their personal set-ups with them.



# intellimix

## TECHNICAL HIGHLIGHTS IN BRIEF

▶▶ Intellimix® relies on the power of the latest generation floating point DSP (Analog Devices Sharc 21065). A total of **14 different audio sources** may be connected in various analog and digital formats. There are two microphone inputs (balanced XLR) with high quality preamplifiers; patch points and phantom power are included. These microphone inputs are placed on the front of the Base Unit in order to be easily accessible. The line inputs (all of them stereo) include 5 digital AES/EBU inputs, 1 digital S/PDIF (switchable to TOS-Link), 5 balanced analog inputs with XLR connectors, and 1 unbalanced analog input on RCA connectors for consumer equipment, the latter placed on the front of the Base Unit for easy access. Any selected source is clearly indicated by bright **alpha-numeric displays** (easily visible in bright light) on the Intellimix® Control Unit.

▶▶ Though all digital inputs are **equipped with sample rate converters**, you can also select external or internal synchronization. Any input (line or mic) can be assigned to one of the faders by the internal digital router. The outputs of Intellimix® offer a comprehensive array of connectivity, as all digital and analog output formats are available simultaneously.

▶▶ In addition to the conventional audio outputs, Intellimix® provides **two Mix-Minus outputs**. Both are available in stereo and cover the remaining needs for analog or digital connectivity. For example, you can send clean feeds for live field reports via ISDN codecs in stereo, or select a mono caller feed for incoming telephone calls.

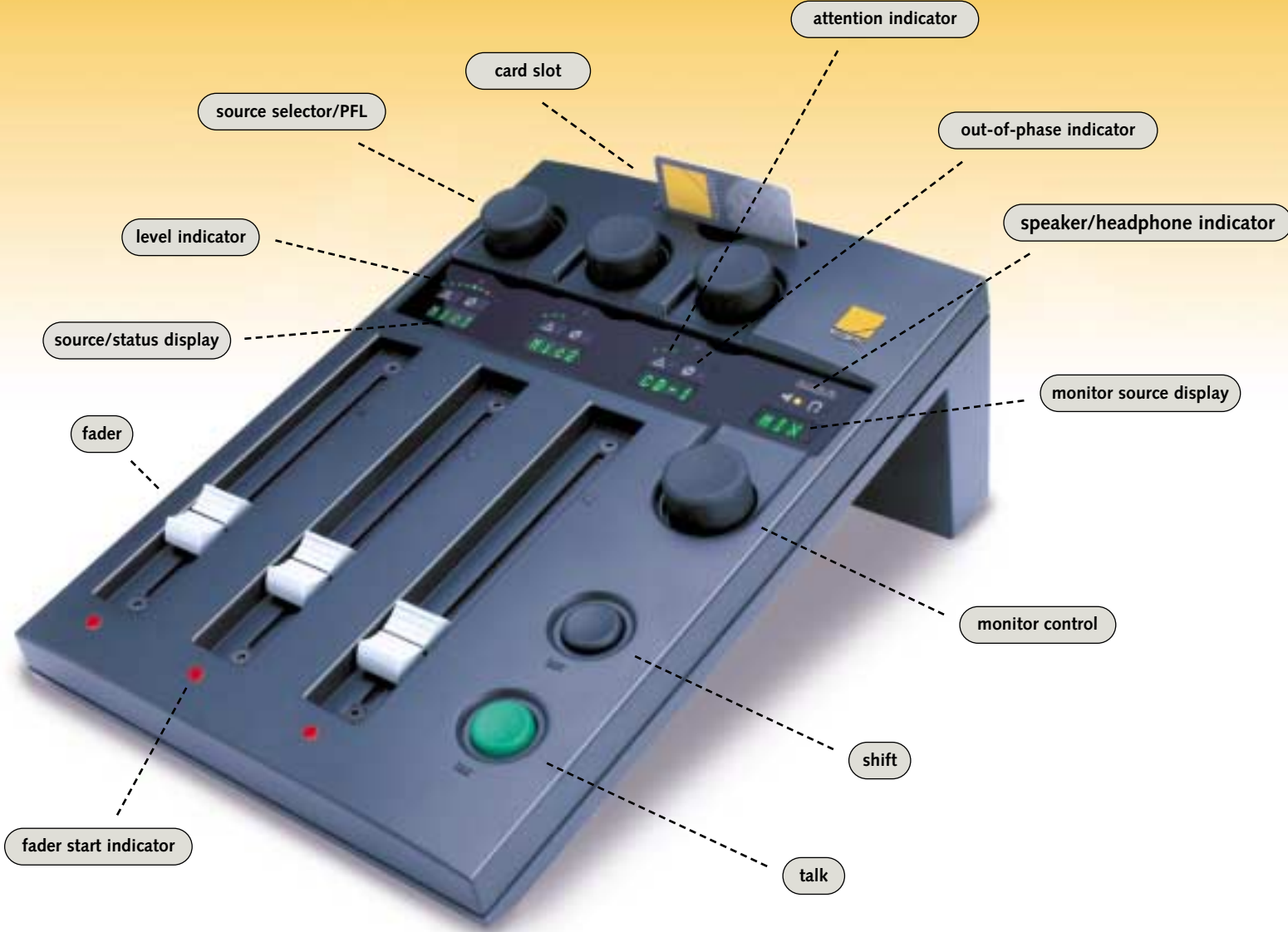
▶▶ The monitor section toggles between speaker and headphone outputs.

**What you hear is what you mix!** SmartLevel® protects your ears and your monitors.

PFL is available by just pushing the source selectors and, if required, enable an individual monitor source matrix. All monitoring is automated and On Air logic is fully implemented.

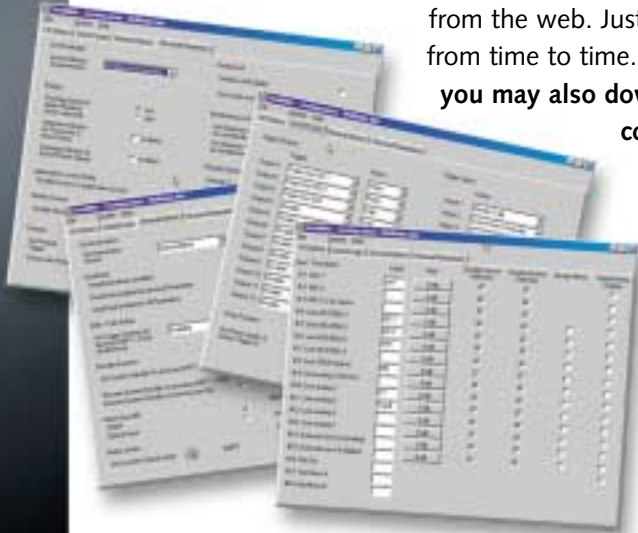
▶▶ In addition to comprehensive input, output, and routing options, Intellimix® offers you **a large number of configurable control options** like fader start, general I/O logic and much more switching. To see it all, just take a look at the configuration software.





## THE CONFIGURATION SOFTWARE

The hidden secret behind the power of Intellimix® is its Windows® based configuration software. Here you select I/O options, control logic, general options and personal parameters. Configure Intellimix® to your specific requirements. For individual user configurations, just download your settings into the Yellowtec® SmartCard or to a PC and carry it from studio to studio. You'll avoid heated arguments about the ideal settings for the work environment – **all users can use their favorite setup!** There's no need to worry about the future either, as general software upgrades for Intellimix® will be available for download from the web. Just check our website from time to time. **For a closer look, you may also download the complete configuration software now!**



## SPECIFICATIONS

▶▶ Total Quantity of Inputs	14
▶▶ MIC Inputs (2 x)	24 Bit A/D, adjustable Gain +70 to -20 dB by 1 dB steps, Input Impedance >5 k ohms (balanced), individual 48V Phantom Power, Patch Points @ 4/6 dBu
▶▶ Analog Line Inputs (5 x Stereo, balanced)	24 Bit A/D, adjustable Gain +20 to -20 dB by 1 dB steps, Input Impedance >8 k ohms (balanced), Nominal Level +4/6 dBu
▶▶ Analog Line Input (1 x Stereo, unbalanced)	24 Bit A/D, adjustable Gain +20 to -20 dB by 1 dB steps, Input Impedance >10 k ohms (unbalanced), Nominal Level -11 to +9 dBu adjustable on Base Unit Front Panel
▶▶ Digital Line Inputs (5 x AES/EBU)	Adjustable Gain +20 to -20 dB by 1 dB steps, Input Transformer Impedance 110 ohms (AES/EBU), individual SRCs
▶▶ Digital Line Input (1 x SPDIF by software selectable to TOS Link)	Adjustable Gain +20 to -20 dB by 1 dB steps, Input Impedance 75 ohms (SPDIF), SRC
▶▶ Analog Stereo Outputs (all designed identical, incl. Patch Points)	24 Bit D/A, Output Impedance <40 ohms (balanced), max. Level +15 dBu (+9 dBu for RCA)
▶▶ Digital Stereo Outputs	Output Transformer Impedance 110 ohms (AES/EBU) individual SRCs
▶▶ Overall Frequency Response	20 – 20.000 Hz ±0,5 dB
▶▶ Sample Rate	Internal 48/44,1 kHz or External Sync incl. Varispeed
▶▶ Serial Link for Configuration Software (CS)	RS232 @ 19,2 Kbit/s
▶▶ Power Requirements	90 – 260 Volts AC, 50/60 Hz, typical <20 Watts
▶▶ Weights	Base Unit 3,9 kg / Control Unit 1,2 kg



WE TALK BROADCAST

# intellimix

YELLOWTEC

Heinrich-Hertz-Strasse 1-3  
D-40789 Monheim  
Phone +49-2173-967-30  
Fax +49-2173-967-400  
e-mail info@yellowtec.com



YELLOWTEC