

YELLOWTEC



**VIP** digital



second  
edition



YELLOWTEC



## VOICE VERSUS MUSIC – A DELICATE BALANCE

In the ever-competitive radio market, creating a unique „sound“ has become one of the most vital challenges facing station management. While a combination of microphone and on-air processing is often used – voice and music processing requirements are different – the need for developing a synergy between them has not been adequately addressed. But with VIP/digital, you now get the ultimate tool to meet today's demands for clean, yet dynamic mic processing. VIP/digital gives you more power than any other mic processor you've encountered. It lets you tailor your talent's voice with an unprecedented arsenal of processing tools, then mates it perfectly with your station's on-air audio processing.

## GIVE YOUR TALENT ADDED PUNCH

VIP/digital is your top choice in mic processing, because it bundles the industry's finest digital audio processing advances in one compact, economical package. From its Smart Detection De-esser to the integration of a natural-sounding reverb with comprehensive adjustments, not a single processing tool you need is missing. There's even a delay line, rarely included in products of this class, but indispensable for post production. Avoid the headaches of searching for the right combination of equipment with the processing you need – then expecting them to work together when you cascade them. Benefit from a new level of user convenience. In addition to its unique sound quality, VIP/digital offers a trouble-free and smart approach to handle user presets.

## TECHNICAL HIGHLIGHTS IN

- ▶▶ **Two Mic inputs.** Their selection can be programmed via presets
- ▶▶ **Studio Reference-Grade Mic PreAmp.** 24-bit converter, 48V phantom power and up to 54 dB gain for dynamic microphones.
- ▶▶ **Low latency.** In digital broadcasting, low latency is an essential requirement for off-air monitoring. VIP/digital has a total maximum latency of less than 1.5 ms – among the best anywhere.
- ▶▶ **Compressor.** With a straightforward design for easy operation, it handles everything from a whisper to a scream. [←- „whisper to a scream“ is great!]
- ▶▶ **Expander.** Adds natural-sounding dynamics to your voice.
- ▶▶ **AGC.** Automatic Gain Control with sensible [?] controls.
- ▶▶ **De-Esser.** State-of-the-art FFT analysis, combined with a new and unique algorithm, allows optimal operation independent of input level. The result? Removal of unwanted sibilance while preserving the upper frequency spectrum.
- ▶▶ **Parametric EQ.** Four individual, single-band EQs offer selectable frequency, Q, and bell or shelving contours.



WE TALK BROADCAST



RS232

level indicators

function display

preset recall

## BRIEF

- ▶▶ **Built-in Phase Rotators.** Switch out phase rotation in your main processing for cleaner, clearer music, while adjusting phase rotation only on the talent line – just where it's needed.
- ▶▶ **VIPVerb®.** High quality reverb section with easy to set parameters adds the exact amount of ambience you desire.
- ▶▶ **Delay line.** Provides compensation for time delay in post production environments.
- ▶▶ **Subsonic Filter.** Eliminates low frequency „garbage“ that can degrade overall sonic performance if left unchecked.
- ▶▶ **Variable module order.** With the Sound Control Software, you simply drag and drop any of the above objects into the desired order for optimal processing of your signal – just like the dedicated, high-power production tools you may be familiar with.
- ▶▶ **GPI/GPO.** A variety of I/O controls integrates your VIP/digital smoothly and intelligently into your studio workflow.

## THINK DIFFERENT – THINK SMARTCARD \*

There's no longer any reason to compromise the sound of your talent with processor settings that are supposed to suit everyone, but satisfy no one. Each voice/mic/studio combination requires customized processing. Efforts in the past were not satisfactory – the more control you had, the greater the risk of losing control. With VIP/digital, you get the perfect solution: Give each of your talent a unique and personal sound, then store the processing parameters in the YELLOWTEC® SmartCard. Sized like a credit card, it stores up to 3 individual presets on a semiconductor chip that won't be erased by stray magnetic fields. Experience the benefit of improving your sound with perfect security. Your talent can take their YELLOWTEC® SmartCards with them from studio to studio, saving you the trouble of re-configuring each studio every time there's a different user. Once stored in the SmartCard, talent can customize any VIP/digital unit with his/her settings. Each VIP/digital unit also stores a minimum of 50 complete presets internally. You can grant varying degrees of access to these internal presets, so that users only see the presets that are appropriate.

**\*To get the whole story on the power and versatility of the YELLOWTEC® SmartCard, visit our website.**



## GO DIGITAL – PAY LESS

Check out the compelling benefits of the unmatched processing capabilities of VIP/digital. Explore the new all digital synonym for smart solutions in broadcast. Enjoy top performance at an affordable price.

Find your dealer on

[www.yellowtec.com](http://www.yellowtec.com)

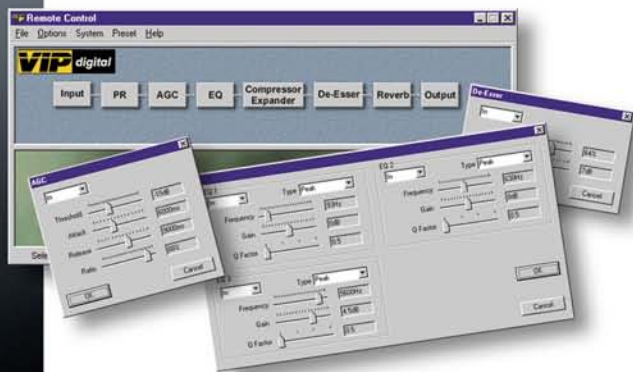
## SAFE SOUND

In addition to providing superb and innovative voice processing, VIP/digital incorporates a novel and powerful operational paradigm. Via powerful Windows® based configuration software, you can adjust VIP/digital to create customized presets. Explore the convenience of connecting a laptop via the front panel RS-232 connector to make adjustments, download them to a SmartCard, and set up security parameters. A clear graphical interface keeps you from having to squint at small print and turn knobs on a crowded faceplate, only to have someone tinker with the knobs when you're gone.

After you disconnect the PC, no one will be able to tamper with the settings you

have carefully created. (For instance, trim down your VIP/digital to one basic voice processing and enable the use of the YEL-LOWTEC® SmartCard to run individual sounds (only)). Considering that user friendliness goes hand in hand with error-free operation, we pared the front panel layout to only three buttons which are used to recall presets stored on the YEL-LOWTEC® SmartCard. Talent simply inserts his/her YELLOWTEC® SmartCard into a slot, verifies the cardholder's name on the display, and instantly gains access to presets.

**Download a free copy of the configuration software from our website and explore the versatility of this powerful tool.**



WE TALK BROADCAST

## SPECIFICATIONS

|  |   |
|--|---|
| ▶▶ <b>Analog Inputs (Two XLR Inputs)</b>                                 |   |
| ▶▶ <b>Software Configurable as 2x MIC or 2x LINE or 1x LINE + 1x MIC</b> | Selection of Input 1 or Input 2 by software toggle, 24-bit A/D, adjustable Gain 0 to 54 dB (before A/D converter), Input Impedance >6 k ohms (balanced, transformerless), 48V phantom power On/Off software switch selectable |
| ▶▶ <b>Digital LINE Input</b>   | AES/EBU, Left/Right, software switch selectable   |
| ▶▶ <b>Input Headroom</b>   | 15 dB (= 0 dBFS)  |
| ▶▶ <b>Input Reference Level</b>  | 4 dbu refers to -11 dBFS in the digital domain  |
| ▶▶ <b>Common Mode Rejection</b>  | -65 dB (60 dB gain @ 50Hz - 20 kHz, 150 ohms source impedance)  |
| ▶▶ <b>Digital Line Output</b>  | AES/EBU   |
| ▶▶ <b>Analog Line Output</b>   | 24-bit D/A, max. Level +15 dBu, Output impedance <50 ohms, balanced, transformerless  |
| ▶▶ <b>Telephone Hybrid Output</b>  | Mono Post Preamp (clean feed), 24-bit D/A, max. level +15 dBu, Output impedance <50 ohms, balanced, transformerless   |
| ▶▶ <b>Sync Input</b>   | AES/EBU frame sync  |
| ▶▶ <b>Sampling Rate</b>  | 48 kHz or external sync   |
| ▶▶ <b>SmartCard</b>  | ISO 4488, 8 kByte   |
| ▶▶ <b>Serial Link for Configuration Software (CS)</b>                    | RS232 via DB9 connector on back panel, additional port with RJ11 connector on front panel   |
| ▶▶ <b>Power Requirements</b>   | 90-260 Volts AC, 50/60 Hz, typical < 20 Watts   |
| ▶▶ <b>Weight</b>   | 3.9 kg (8.6 lbs)  |
| ▶▶ <b>Dimensions</b>   | a cm x b cm x c cm (d in x e in x f in)   |

Visit our website for more details.

[www.yellowtec.com](http://www.yellowtec.com)



**YELLOWTEC**  
 Heinrich-Hertz-Strasse 1-3  
 D-40789 Monheim  
 Phone +49-2173-967-30  
 Fax +49-2173-967-400  
 e-mail info@yellowtec.com

